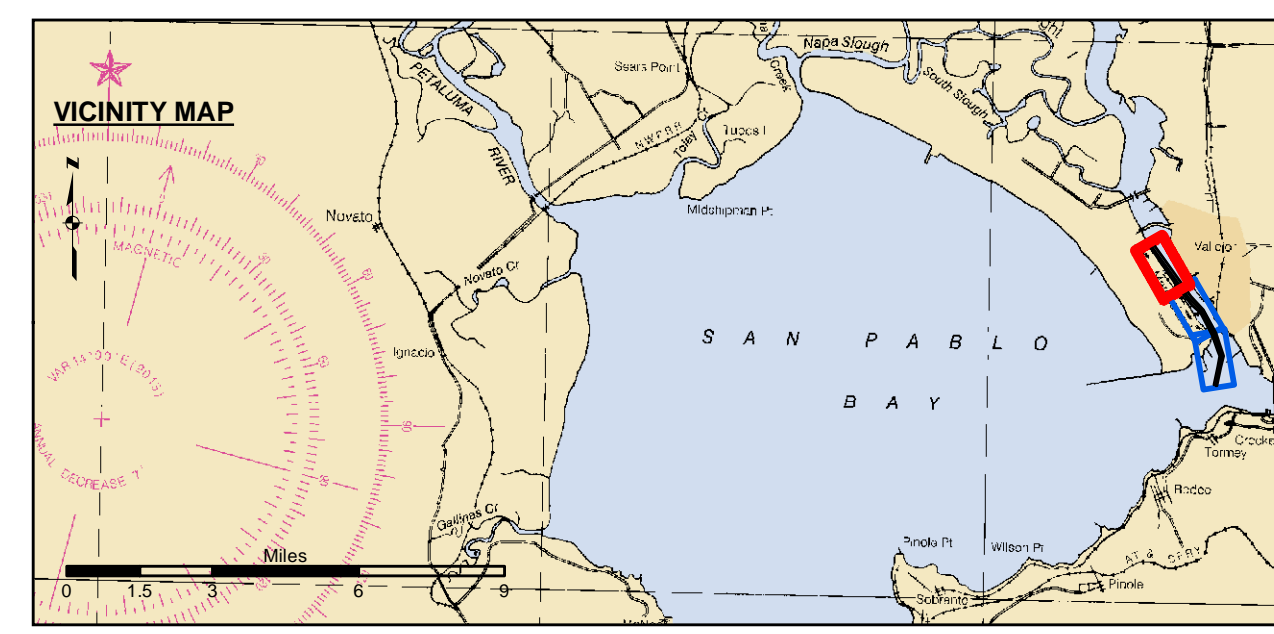


PRELIMINARY ISSUE
THIS PLAN ISSUED FOR
ADVANCE INFORMATION ONLY

NAD 83 CHANNEL ANGLE POINT		
Angle Pt	X	Y
C01	6051581.21	2230222.67
C02	6055795.81	2224330.97
C03	6057191.11	2222944.87
C04	6058518.11	2220503.97
C05	6059347.51	2218102.87
C06	6058696.31	2214902.17

NAD 83 CHANNEL ANGLE POINT		
Angle Pt	X	Y
1	6051829.91	2230390.67
2	6052091.81	2230024.57
3	6056039.61	2224505.87
4	6057346.91	2223082.07
5	6058699.11	2220590.07
6	6059555.31	2218121.17
7	6058891.41	2214858.27
8	6058501.11	2214945.97
9	6059139.71	2218084.57
10	6058937.71	2218596.57
11	6058337.01	2220417.87
12	6057035.31	2222807.67
13	6056140.51	2223621.17
14	6054337.11	2225843.77
15	6051448.71	2230133.17



Federal Navigation Channel	Beacon, General	Contours	-30
Shoaling Area	Obstruction Point		-29
Placement Area	Navigation Buoy	-28	
Anchorage Area	Navigation Buoy	-27	
Wreck Area	Shoalest Sounding*	-26	
Submerged Wreck			
Angle Point			

NOTES:
DRAWING NOT TO BE USED FOR NAVIGATION. ONLY CHANNEL CONDITION AT DATE OF SURVEY.
THE LOCATION OF ALL NAVIGATION AIDS ARE BASED ON INFORMATION PROVIDED BY THE U.S. COAST GUARD. BUOY LOCATIONS REPRESENT THE POSITION OF THE SINKER ONLY.
SURVEYED BY THE CORPS OF ENGINEERS.
SOUNDINGS WERE TAKEN BY FATHOMETER AND ARE SHOWN TO THE NEAREST TENTH OF A FOOT.
SOUNDINGS ARE BASED ON THE DATUM OF MEAN LOWER LOW WATER AT THE LOCALITY.
VERTICAL CONTROL:
USACE BM NAPAR03, MLLW=11.609 FT
MARK LOCATED ON PIER 56, MARE ISLAND
NOS BM 5218 K 1976 (PID-J9537), MLLW = 12.136 FT
MARK US LOCATED AT SOUTH END OF MARE ISLAND
http://tidesandcurrents.noaa.gov/data_menu.shtml?sn=9415218
MARE ISLAND, CA & TYPE = BENCH MARK SHEETS
TIDE GAUGE LOCATION:
1. NOAA STATION 941 5218 - ONLINE
2. MARE ISLAND BERTH 2
HORIZONTAL GPS CONTROL
COAST GUARD D-BEACON
PLANE GRID AND COORDINATES ARE BASED ON THE STATE OF CALIFORNIA COORDINATE SYSTEM, LAMBERT CONFORMAL PROJECTION, ZONE III NAD 83, CALIFORNIA, AS DESCRIBED IN SPECIAL PUBLICATION NO. 235, PUBLISHED BY NATIONAL OCEAN SURVEY.
1.00 INDICATES THE NUMBER AND BEGINNING OF A LINE OF SOUNDINGS.
PROJECT DEPTH IS 30 FEET FOR MAIN CHANNEL AND 36 FT FOR NAVY CHANNEL

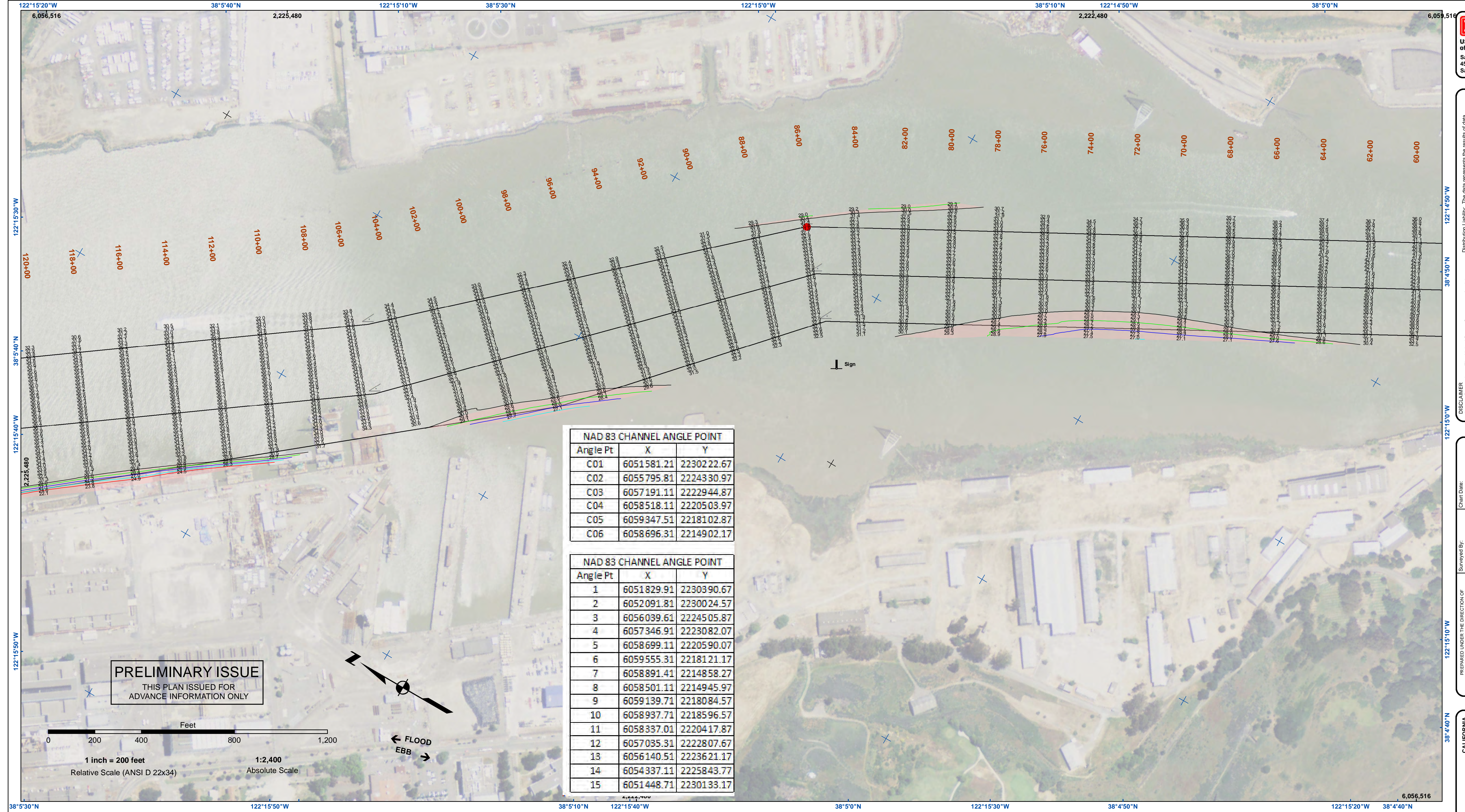
US Army Corps of Engineers
San Francisco District
450 Golden Gate
San Francisco, CA 94103

DISCLAIMER: The United States Government furnishes this information for general information only. The United States Government makes no warranty, expressed or implied, concerning the accuracy, completeness, or timeliness of the information. The United States Government shall not be liable for any damages, including consequential, special, or incidental damages, arising out of the use of the information. These data belong to the Government. Therefore, the recipient may not transfer these data to others without also transferring this Disclaimer.

Prepared Under the Direction of:	Chart Date:
LT COLONEL K.E. ARNETT	Oct 05, 2021
Submitted:	Designed by:
Hydro Survey Team Leader	PDT
Recommended:	Checked by:
Chief, Hydro Survey Section	PDT
Approved:	Drawn by:
Chief, Construction Branch	PDT

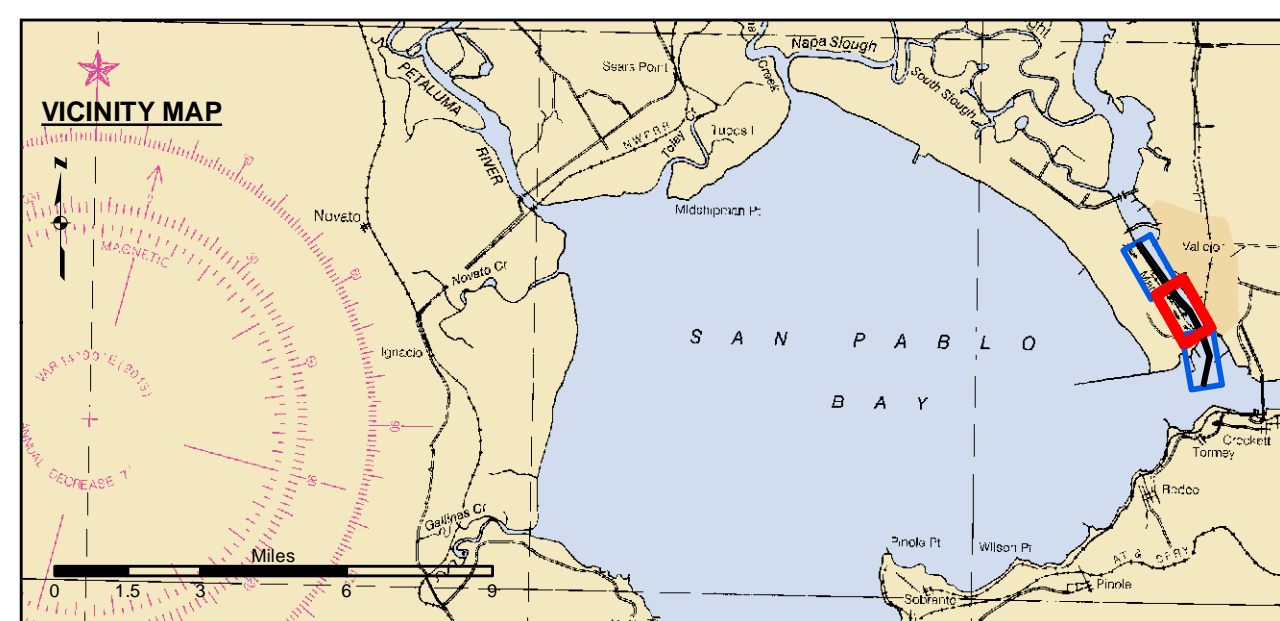
CALIFORNIA
MARE ISLAND STRAIT
CONDITION SURVEY
29 SEPTEMBER 2021

Sheet Reference Number
1 of 3



NAD 83 CHANNEL ANGLE POINT		
Angle Pt	X	Y
C01	6051581.21	2230222.67
C02	6055795.81	2224330.97
C03	6057191.11	2222944.87
C04	6058518.11	2220503.97
C05	6059347.51	2218102.87
C06	6058696.31	2214902.17

NAD 83 CHANNEL ANGLE POINT		
Angle Pt	X	Y
1	6051829.91	2230390.67
2	6052091.81	2230024.57
3	6056039.61	2224505.87
4	6057346.91	2223082.07
5	6058699.11	2220590.07
6	6059555.31	2218121.17
7	6058891.41	2214858.27
8	6058501.11	2214945.97
9	6059139.71	2218084.57
10	6058937.71	2218596.57
11	6058337.01	2220417.87
12	6057035.31	2222807.67
13	6056140.51	2223621.17
14	6054337.11	2225843.77
15	6051448.71	2230133.17



Federal Navigation Channel	Beacon, General	Contours	-30
Shoaling Area	Obstruction Point		-29
Placement Area	Navigation Buoy	-28	-27
Anchorage Area	Navigation Buoy	-26	
Wreck Area	Shoalest Sounding*		
Submerged Wreck			
Angle Point			

NOTES:
DRAWING NOT TO BE USED FOR NAVIGATION. ONLY CHANNEL CONDITION AT DATE OF SURVEY.
THE LOCATION OF ALL NAVIGATION AIDS ARE BASED ON INFORMATION PROVIDED BY THE U.S. COAST GUARD. BUOY LOCATIONS REPRESENT THE POSITION OF THE SINKER ONLY.

SURVEYED BY THE CORPS OF ENGINEERS.
SOUNDINGS WERE TAKEN BY FATHOMETER AND ARE SHOWN TO THE NEAREST TENTH OF A FOOT.
SOUNDINGS ARE BASED ON THE DATUM OF MEAN LOWER LOW WATER AT THE LOCALITY.

VERTICAL CONTROL:
USACE BM NAPAR03, MLLW=11.609 FT
MARK LOCATED ON PIER 56, MARE ISLAND

NOS BM 5218 K 1976 (PID-JT9537), MLLW = 12.136 FT
MARK US LOCATED AT SOUTH END OF MARE ISLAND
http://hidesandcurrents.noaa.gov/data_menu.shtml?sn=9415218
MARE ISLAND, CA & TYPE = BENCH MARK SHEETS

TIDE GAUGE LOCATION:
1. NOAA STATION 941 5218 - ONLINE
2. MARE ISLAND BERTH 2

HORIZONTAL GPS CONTROL
COAST GUARD D-BEACON

PLANE GRID AND COORDINATES ARE BASED ON THE STATE OF CALIFORNIA COORDINATE SYSTEM, LAMBERT CONFORMAL PROJECTION, ZONE III NAD 83, CALIFORNIA, AS DESCRIBED IN SPECIAL PUBLICATION NO. 235, PUBLISHED BY NATIONAL OCEAN SURVEY.

1.00 INDICATES THE NUMBER AND BEGINNING OF A LINE OF SOUNDINGS.
PROJECT DEPTH IS 30 FEET FOR MAIN CHANNEL AND 36 FT FOR NAVY CHANNEL

US Army Corps of Engineers
San Francisco District
450 Golden Gate
San Francisco, CA 94103

DISCLAIMER: The United States Government furnishes no warranty, expressed or implied, concerning the accuracy, completeness, or reliability of the information and the data furnished. The United States shall be under no liability whatsoever to any person by reason of any use made thereof. These data belong to the Government. Therefore the recipient may not transfer these data to others without also transferring this Disclaimer.

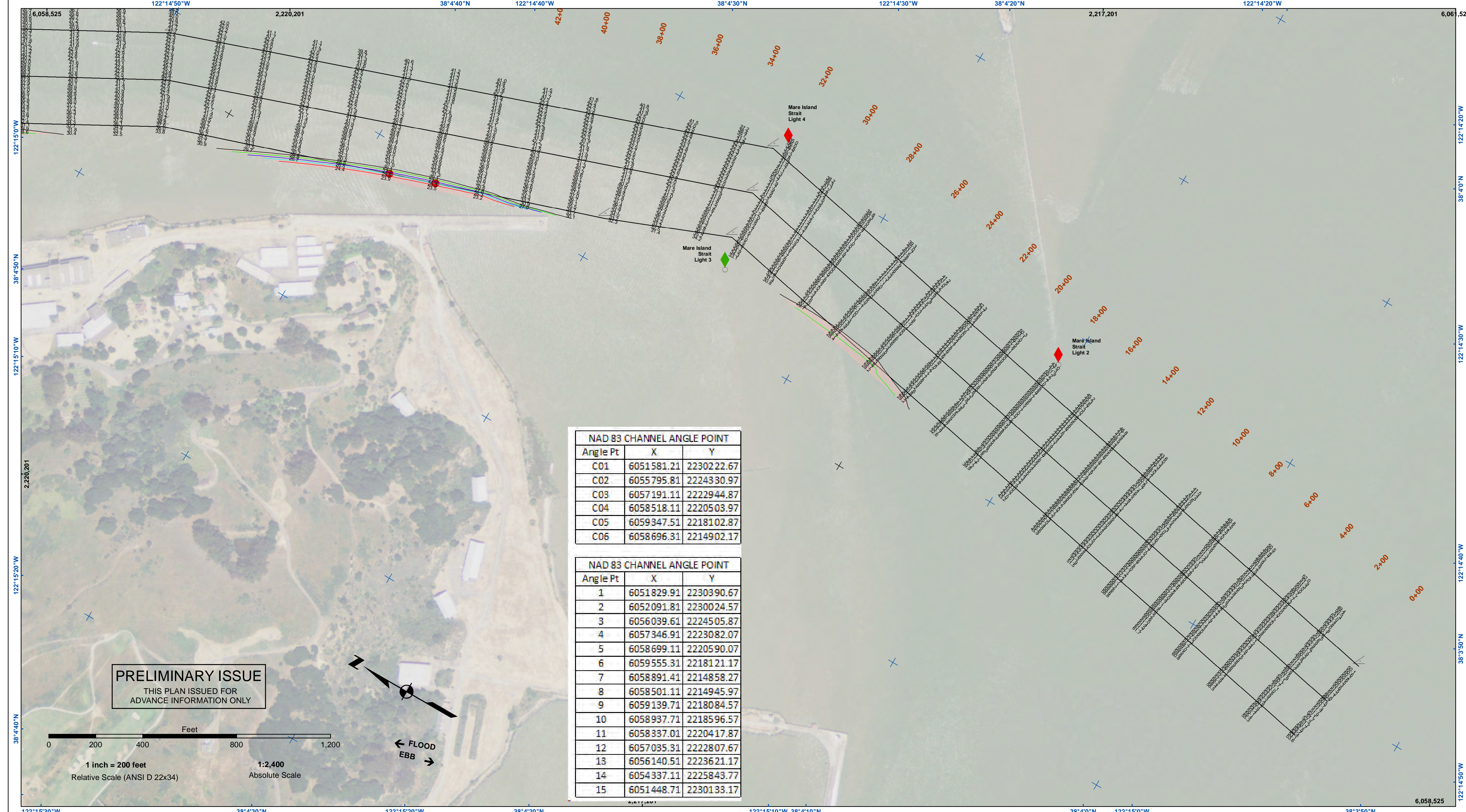
Access Conditions: The United States Government furnishes no warranty, expressed or implied, concerning the accuracy, completeness, or reliability of the information and the data furnished. The United States shall be under no liability whatsoever to any person by reason of any use made thereof. These data belong to the Government. Therefore the recipient may not transfer these data to others without also transferring this Disclaimer.

Distribution Liability: The data represents the results of data collection/processing for a specific US Army Corps of Engineers activity and indicates the general existing conditions. Engineers activity and indicates the general existing conditions. The user is responsible for the results of any of the application of the data for other than its intended purpose.

Chart Date:	Oct 05, 2021
Designed by:	PDT
Drawn by:	PDT
Surveyed By:	Plotted By: PDT
Checked By:	PDT
Approved:	Chief, Construction Branch

CALIFORNIA
MARIN COUNTY
MARE ISLAND STRAIT
CONDITION SURVEY
29 SEPTEMBER 2021

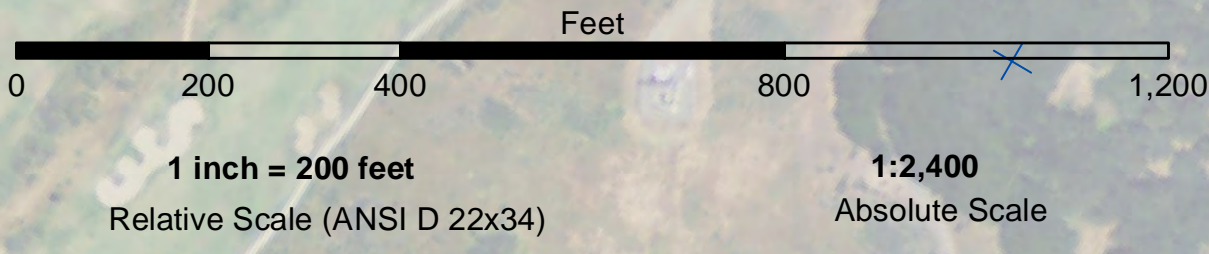
Sheet Reference Number
2 of 3



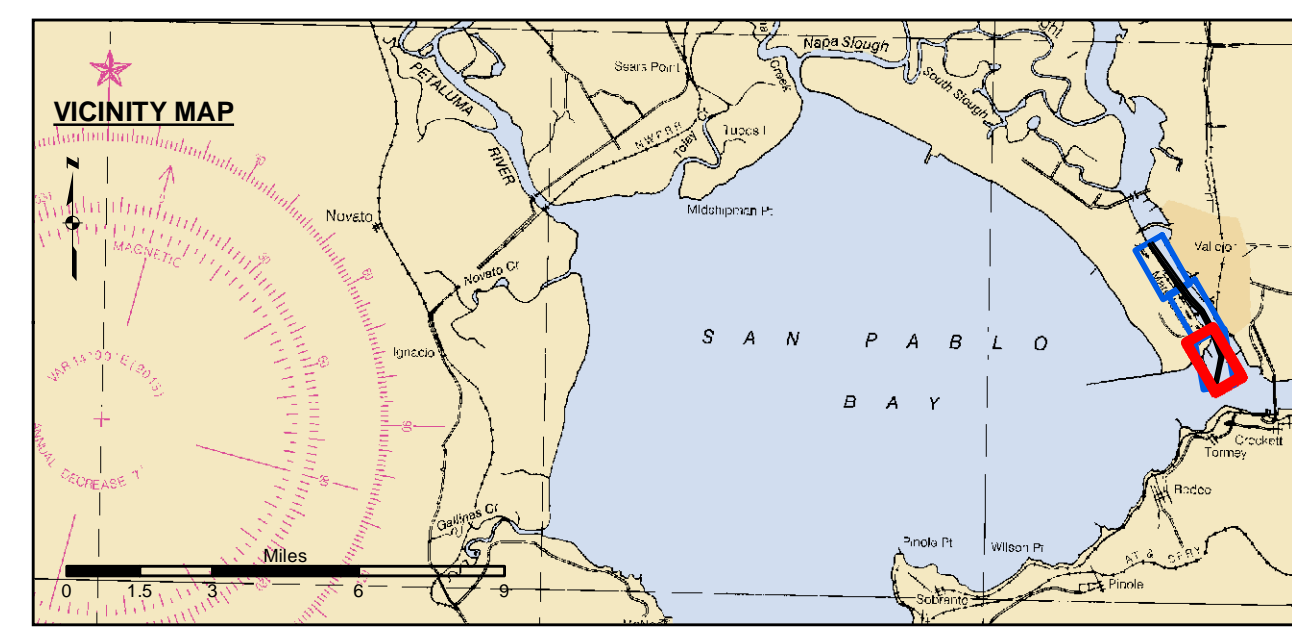
NAD 83 CHANNEL ANGLE POINT		
Angle Pt	X	Y
C01	6051581.21	2230222.67
C02	6055795.81	2224330.97
C03	6057191.11	2222944.87
C04	6058518.11	2220503.97
C05	6059347.51	2218102.87
C06	6058696.31	2214902.17

NAD 83 CHANNEL ANGLE POINT		
Angle Pt	X	Y
1	6051829.91	2230390.67
2	6052091.81	2230024.57
3	6056039.61	2224505.87
4	6057346.91	2223082.07
5	6058699.11	2220590.07
6	6059555.31	2218121.17
7	6058891.41	2214858.27
8	6058501.11	2214945.97
9	6059139.71	2218084.57
10	6058937.71	2218596.57
11	6058337.01	2220417.87
12	6057035.31	2222807.67
13	6056140.51	2223621.17
14	6054337.11	2225843.77
15	6051448.71	2230133.17

PRELIMINARY ISSUE
THIS PLAN ISSUED FOR
ADVANCE INFORMATION ONLY



← FLOOD
EBB →



Federal Navigation Channel	Beacon, General	Contours	-30
Shoaling Area	Obstruction Point		-29
Placement Area	Navigation Buoy	-28	
Anchorage Area	Navigation Buoy	-27	
Wreck Area	Shoalest Sounding*	-26	
Submerged Wreck			
Angle Point			

NOTES:
DRAWING NOT TO BE USED FOR NAVIGATION. ONLY CHANNEL CONDITION AT DATE OF SURVEY.
THE LOCATION OF ALL NAVIGATION AIDS ARE BASED ON INFORMATION PROVIDED BY THE U.S. COAST GUARD. BUOY LOCATIONS REPRESENT THE POSITION OF THE SINKER ONLY.
SURVEYED BY THE CORPS OF ENGINEERS.
SOUNDINGS WERE TAKEN BY FATHOMETER AND ARE SHOWN TO THE NEAREST TENTH OF A FOOT.
SOUNDINGS ARE BASED ON THE DATUM OF MEAN LOWER LOW WATER AT THE LOCALITY.
VERTICAL CONTROL:
USACE BM NAPAR03, MLLW=11.609 FT
MARK LOCATED ON PIER 56, MARE ISLAND
NOS BM 5218 K 1976 (PID-J9537), MLLW = 12.136 FT
MARK US LOCATED AT SOUTH END OF MARE ISLAND
http://tidesandcurrents.noaa.gov/data_menu.shtml?sn=9415218
MARE ISLAND, CA & TYPE = BENCH MARK SHEETS
TIDE GAUGE LOCATION:
1. NOAA STATION 941 5218 - ONLINE
2. MARE ISLAND BERTH 2
HORIZONTAL GPS CONTROL
COAST GUARD D-BEACON
PLANE GRID AND COORDINATES ARE BASED ON THE STATE OF CALIFORNIA COORDINATE SYSTEM, LAMBERT CONFORMAL PROJECTION, ZONE III NAD 83, CALIFORNIA, AS DESCRIBED IN SPECIAL PUBLICATION NO. 235, PUBLISHED BY NATIONAL OCEAN SURVEY.
1.00 INDICATES THE NUMBER AND BEGINNING OF A LINE OF SOUNDINGS.
PROJECT DEPTH IS 30 FEET FOR MAIN CHANNEL AND 36 FT FOR NAVY CHANNEL

US Army Corps of Engineers
San Francisco District
450 Golden Gate
San Francisco, CA 94103

DISCLAIMER: The United States Government furnishes no warranty, expressed or implied, concerning the accuracy, completeness, or reliability of the data furnished. The United States shall be under no liability whatsoever to any person by reason of any use made thereof. These data belong to the Government. Therefore the recipient may not transfer these data to others without also transferring this Disclaimer.

Chart Date:	Oct 05, 2021
Designed by:	PDT
Drawn by:	PDT
Surveyed By:	Plotted By: PDT
Checked By:	PDT

CALIFORNIA
MARIN COUNTY
MARE ISLAND STRAIT
CONDITION SURVEY
29 SEPTEMBER 2021

Sheet Reference Number
3 of 3